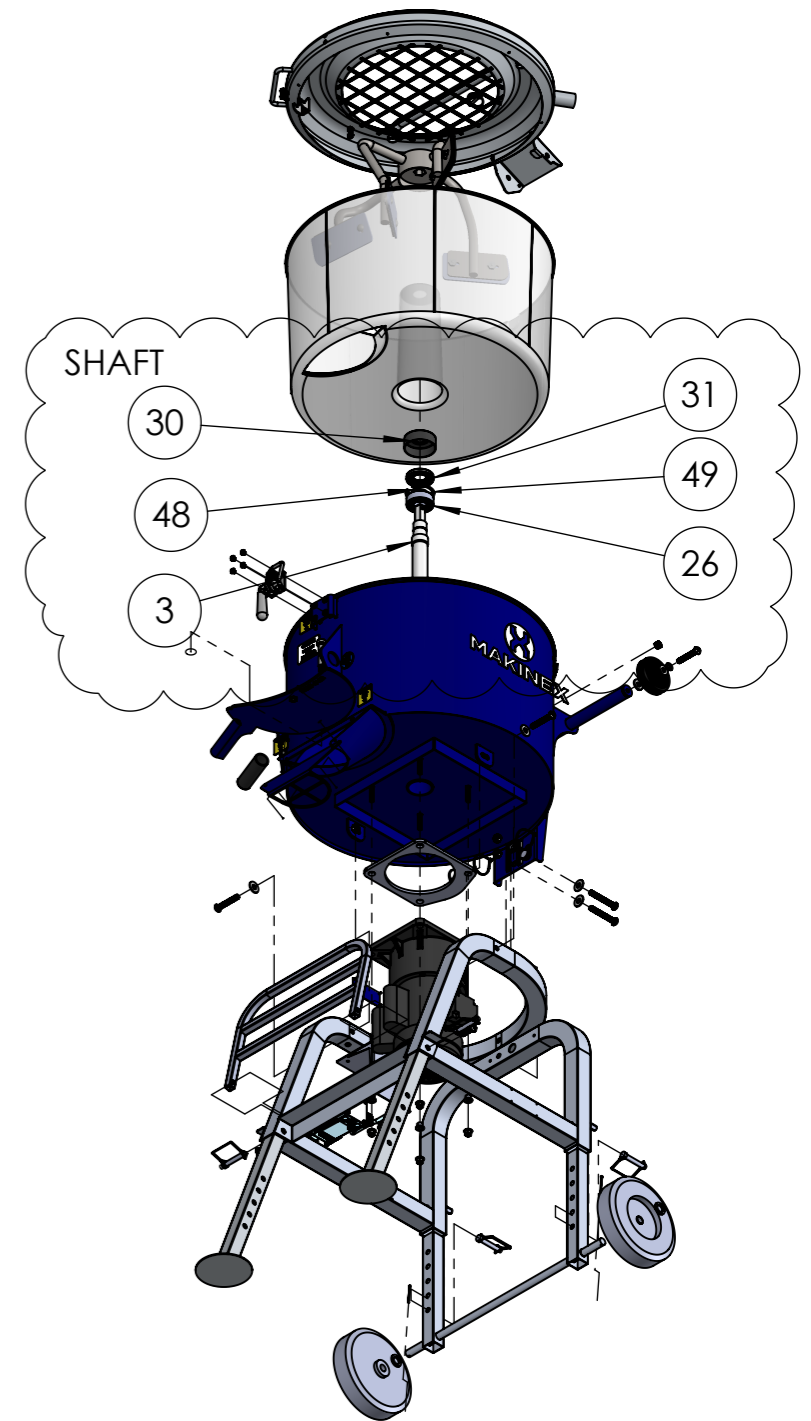
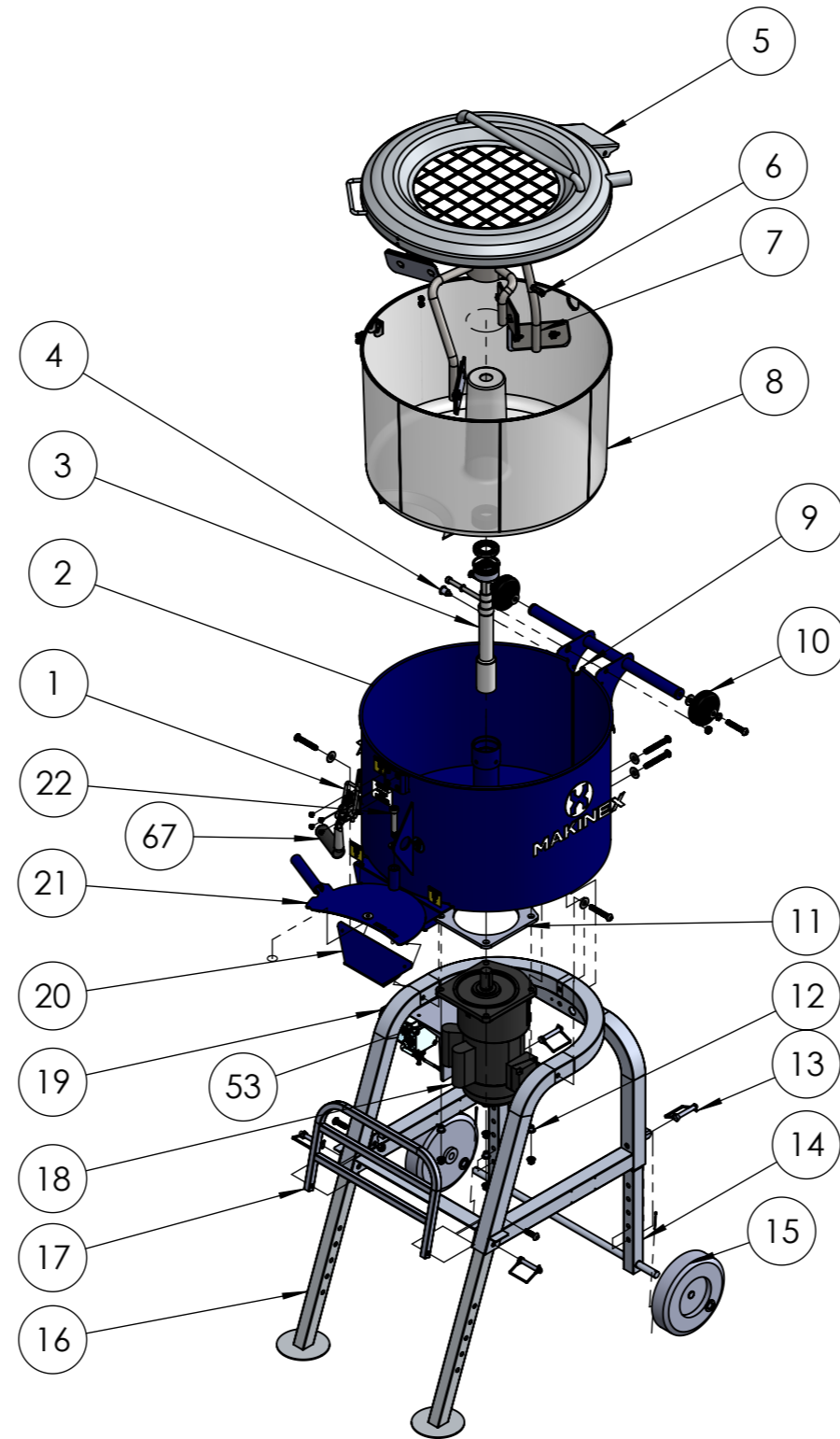


# SPARES EXPLODED DIAGRAM

ITEMS LABELLED WITH NUMBER WILL  
AVAILABLE FOR ORDER FOR SPARES PARTS



NOTES:  
1. APPLY LOCTITE 243 OR EQUIVALENT TO ALL BOLTS

PRINT MAY BE REDUCED - DO NOT SCALE.

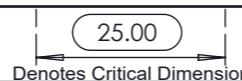


Sydney (Head Office) Ph: 1300 795 953  
15 Waltham St  
Artarmon, 2064  
NSW, Australia  
www.makinex.com.au  
sales@makinex.com.au

GENERAL TOLERANCES  
(Unless otherwise noted)  
0-100mm: ± 0.25 mm  
100mm - 500mm: ± 0.5 mm  
500mm+: ± 1.0 mm  
Angular: ± 1 deg.



All Dimensions are in Millimetres  
Break All Sharp Corners and  
Remove Burrs & Swarf



DATE: 27/01/2026

PART NO.: FAM - 120 - AU

DESCRIPTION: FAM - ASSY COMPLETE AU

REV:

SCALE: 1:15 A3

PROJECT: FAM

B

MATERIAL: REFER TO PART

FINISH: REFER TO PART

MASS:

THICKNESS:

DIAMETER:

DRAWN BY: AL



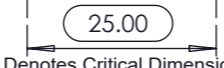
APPROVED BY:

SHEET 1 OF 2

ITEM NO.	PART NUMBER	DESCRIPTION	QTY.	SPARES?
1	MAK-UP-442	FAM LATCH	1	Y
2	FAM - 025	FAM - ASSY WELDED DRUM	1	Y
3	FAM - 015	FAM - MOTOR SHAFT	1	Y
4	MAK-UP-446	INDEX PLUNGER M10X8 6MM SS GN 822.6-6-M10-B	1	Y
5	FAM - 007	FAM - ASSY LID	1	Y
6	MAK-UP-444	M6 LINCH PIN SS	1	Y
7	FAM - 009	FAM - ASSY PADDLE	1	Y
8	FAM - 027	FAM - DRUM LINER	1	Y
9	MAK-UP-1016	SAFETY SWITCH - LIMIT SWITCH ASSEMBLY QKS7 IP54	1	Y
10	MAK-UP-441	WHEEL - 100MM OD X 32 12MM ID 100KG	2	Y
11	FAM - 018	FAM - GASKET	1	Y
12	FAM - 024	FAM - MOTOR MOUNT SPACER	4	Y
13	MAK-UP-1015	SAFETY PIN - M12 X 70 SQUARE WIRE	4	Y
14	FAM - 008	FAM - ASSY REAR EXTENDER	1	Y
15	FAM - 043	FAM - WHEEL	2	Y
16	FAM - 004	FAM - ASSY LEG EXTENDER COMPLETE	2	Y
17	FAM - 003	FAM - BUCKET STAND	1	Y
18	FAM - 020	FAM - 1.5KW MOTOR WITH THERMAL OVERLOAD	1	Y
19	MAK-UP-492	FAM - ELECTROMAGNETIC SWITCH 9A KOA2T	1	Y
20	FAM - 025-009	FAM - SPOUT GUARD	1	Y
21	FAM - 041	FAM - ASSY SPOUT GATE LINER	1	Y
22	MAKF-0233	M12 X 70 SHOULDER HEX SS	1	Y
23	MAKF-0234	M8 X 8 BUTTON HEAD SS SOCKET ISO 7380	4	N
24	MAKF-0181	M12 FLAT WASHER SS DIN-433	2	N
26	MAK-UP-486	BEARING - DEEP GROOVE BALL BEARING ID35 OD72 23MM DEEP WITH SEAL SKF 62207-2RS1	1	Y
30	FAM - 026	FAM - TOP SEAL	1	Y
31	MAK-UP-487	LIP SEAL - RADIAL SHAFT SEAL FKM METAL REINFORCED ID35 OD75 10MM DEEP SKF 35X75X10 HMSA10 V	1	Y
32	MAKF-0163	M12 LARGE FLAT WASHER NYLON DIN- 1440	4	N
33	MAKF-0068	M4 NYLOC NUT SS DIN-985	2	N
34	MAKF-0094	M12 SPRING WASHER ZP DIN-127B	2	N
35	MAKF-0237	M12 x 70 BUTTON HEAD SS SOCKET ISO 7380 CLASS 12.9	2	N

ITEM NO.	PART NUMBER	DESCRIPTION	QTY.	SPARES?
36	MAKF-0072	M10 NYLOC NUT SS DIN-985	1	N
37	MAKF-0150	M12 LARGE FLAT WASHER ZP DIN-433	4	N
38	MAKF-0239	M12 x 90 BUTTON HEAD SS SOCKET ISO 7380 CLASS 12.9	2	N
39	MAKF-0254	M12 x 75 BUTTON HEAD SS SOCKET ISO 7380 CLASS 12.9	2	N
40	FAM - 002	FAM - ASSY FRAME	1	Y
41	MAKF-0086	M20 FLAT WASHER ZP DIN-433	4	N
42	MAKF-0218	SPLIT PIN 3.2mm x 50mm ZP DIN 94	2	N
43	MAKF-0190	M10 NYLOC NUT FLANGED SS DIN-6926	4	N
44	MAKF-0073	M12 NYLOC NUT SS DIN-985	6	N
45	MAKF-0241	M12 x 40 BUTTON HEAD SS SOCKET ISO 7380 CLASS 12.9	2	N
46	MAKF-0116	M6 X 12 BUTTON HEAD SS SOCKET ISO 7380	2	N
47	MAKF-0228	M16 FLAT WASHER NYLON	1	N
48	MAKF-0259	CIRCLIP - EXTERNAL 35mm DIN471	1	Y
49	MAKF-0260	CIRCLIP - INTERNAL 72mm DIN471	1	Y
50	MAK-UP-289	CABLE TIE PUSH IN 170 X 4.8	3	N
51	MAKF-0117	M6 X 16 BUTTON HEAD SS SOCKET ISO 7380	2	N
52	MAKF-0261	M6 X 55 BUTTON HEAD SS SOCKET ISO 7380	2	N
53	FAM - 037	FAM - ASSY ELECTRICAL BOX BRKT	1	Y
54	FAM - 035	FAM - ASSET PLATE 1.5KW	1	N
55	MAKF-0128	BLIND RIVET DIA 3 SS R3-5 DIN-7337	4	N
56	FAM - 028	FAM - DECAL LOGO	2	Y
57	FAM - 031	FAM - DECAL LATCH	1	Y
58	FAM - 034	FAM - DECAL LIFTING	1	Y
59	FAM - 029	FAM - DECAL PLUNGER	1	Y
60	FAM - 030	FAM - DECAL TROWEL HOLDER	1	Y
61	FAM - 032	FAM - DECAL VAC PORT	1	Y
62	FAM - 033	FAM - MAIN DECAL	1	Y
63	FAM - 039	FAM - DECAL PINCH POINT UP	1	Y
64	FAM - 038	FAM - DECAL PINCH POINT DOWN	2	Y
65	MAK-UP-1005	GROMMET - 26mm X 20.8mm X 3mm (NOT SHOWN IN CAD)	2	Y
66	FAM - 017	FAM - ASSY SPOUT GATE (NOT SHOWN IN CAD)	1	Y
67	MAK-UP-205	BLACK MATTE HONEYCOMB GRIP 29.97 x 115.57 MM	1	Y

PRINT MAY BE REDUCED - DO NOT SCALE.

 <p>Sydney (Head Office) Ph: 1300 795 953 15 Waltham St Artarmon, 2064 NSW, Australia www.makinex.com.au sales@makinex.com.au</p>	<p>GENERAL TOLERANCES (Unless otherwise noted)</p> <p>0-100mm: ± 0.25 mm 100mm - 500mm: ± 0.5 mm 500mm +: ± 1.0 mm Angular: ± 1 deg.</p>	 <p>Third Angle Projection - AS 1100</p>	<p>DATE: 27/01/2026</p>	<p>PART NO. : FAM - 120 - AU</p>	<p>DESCRIPTION: FAM - ASSY COMPLETE AU</p>	<p>REV:  <b>B</b></p>
			<p>SCALE: 1:15 <b>A3</b></p>	<p>PROJECT: FAM</p>	<p>MATERIAL: REFER TO PART</p>	
<p>All Dimensions are in Millimetres Break All Sharp Corners and Remove Burrs &amp; Swarf</p>			<p>THICKNESS:</p>	<p>DIAMETER:</p>	<p>DRAWN BY: AL</p>	<p>APPROVED BY:</p>
 <p>Denotes Critical Dimension</p>			<p>SHEET 2 OF 2</p>			

PRINTED: 27/01/2026